



FRONT FENDER
0026847



0026847.031



0026847.071



0026847.090

FEATURES

Product compatible with the models shown in the application tab

APPLICATIONS

HUSQVARNA FC 250 2023 2024 2025 | HUSQVARNA FC 350 2023 2024 2025 | HUSQVARNA FC 450 2023 2024 2025 | HUSQVARNA FE 250 2024 2025 | HUSQVARNA FE 350 2024 2025 | HUSQVARNA FE 350 PRO 2024 2025 | HUSQVARNA FE 350 S 2024 2025 | HUSQVARNA FE 450 2024 2025 | HUSQVARNA FE 501 2024 2025 | HUSQVARNA FX 350 2023 2024 2025 | HUSQVARNA TC 125 2023 2024 2025 | HUSQVARNA TC 150 2025 | HUSQVARNA TC 250 2023 2024 2025 | HUSQVARNA TC 300 2025 | HUSQVARNA TE 125 2024 2025 | HUSQVARNA TE 150 2024 2025 | HUSQVARNA TE 250 2024 2025 | HUSQVARNA TE 300 2024 2025 | HUSQVARNA TE 300 PRO 2024 2025 | HUSQVARNA TX 300 2023 2024 2025

FRONT FENDER
0023540



0023540.030



0023540.031



0023540.040



0023540.090

APPLICATIONS

HUSQVARNA TC 65 2017 2018 2019 2020 2021 2022 2023 2024 2025

FRONT FENDER
0023040



0023040.030



0023040.031



0023040.040



0023040.090

APPLICATIONS

HUSQVARNA TC 85 2018 2019 2020 2021 2022 2023 2024 2025

FRONT FENDER
0022801



0022801.030



0022801.040



0022801.090

APPLICATIONS

HUSQVARNA TC 85 2014 2015 2016 2017

FRONT FENDER
0017684



0017684.030



0017684.090

APPLICATIONS

HUSABERG FE 250 2013 2014 | HUSABERG FE 350 2013 2014 | HUSABERG FE 450 2013 2014 | HUSABERG TE 125 2013 2014 | HUSABERG TE 250 2013 2014 | HUSABERG TE 300 2013 2014 | HUSQVARNA FE 250 2014 | HUSQVARNA FE 350 2014 | HUSQVARNA FE 450 2014 | HUSQVARNA FE 501 2014 | HUSQVARNA TE 125 2014 | HUSQVARNA TE 250 2014 | HUSQVARNA TE 300 2014

FRONT FENDER
0021825



0021825.030



0021825.031



0021825.072



0021825.132



0021825.092



0021825.040



0021825.041



0021825.070



0021825.083



0021825.090

APPLICATIONS

HUSQVARNA FC 250 2016 2017 2018 2019 2020 2021 2022 | HUSQVARNA FC 350 2016 2017 2018 2019 2020 2021 2022 | HUSQVARNA FC 450 2016 2017 2018 2019 2020 2021 2022 | HUSQVARNA FE 250 2017 2018 2019 2020 2021 2022 2023 | HUSQVARNA FE 350 2017 2018 2019 2020 2021 2022 2023 | HUSQVARNA FE 350 S 2022 2023 | HUSQVARNA FE 450 2017 2018 2019 2020 2021 2022 2023 | HUSQVARNA FE 501 2017 2018 2019 2020 2021 2022 2023 | HUSQVARNA FE 501 S 2022 2023 | HUSQVARNA FX 350 2020 2021 2022 | HUSQVARNA FX 450 2020 2021 2022 | HUSQVARNA TC 125 2016 2017 2018 2019 2020 2021 2022 | HUSQVARNA TC 250 2017 2018 2019 2020 2021 2022 | HUSQVARNA TE 150i 2020 2021 2022 2023 | HUSQVARNA TE 250 2017 | HUSQVARNA TE 250i 2018 2019 2020 2021 2022 2023 | HUSQVARNA TE 300 2017 | HUSQVARNA TE 300i 2018 2019 2020 2021 2022 2023 | HUSQVARNA TX 125 2017 2018 2019 | HUSQVARNA TX 300 2020 2021 2022

FRONT FENDER
0017685



0017685.030



0017685.090

APPLICATIONS

HUSQVARNA FC 250 2014 2015 | HUSQVARNA FC 350 2014 2015 | HUSQVARNA FC 450 2014 2015 | HUSQVARNA FE 250 2015 2016 |
HUSQVARNA FE 350 2015 2016 | HUSQVARNA FE 450 2015 2016 | HUSQVARNA FE 501 2015 2016 | HUSQVARNA TC 125 2014 2015 |
HUSQVARNA TC 250 2014 2015 2016 | HUSQVARNA TE 125 2015 2016 | HUSQVARNA TE 250 2015 2016 | HUSQVARNA TE 300 2015 2016

**FRONT NUMBER
PLATE**
0025454



0025454.031



0025454.232



0025454.090



0025454.234

APPLICATIONS

HUSQVARNA FC 250 2023 2024 2025 | HUSQVARNA FC 350 2023 2024 2025 | HUSQVARNA FC 450 2023 2024 2025 | HUSQVARNA FX 350 2023 2024 2025 | HUSQVARNA FX 450 2023 2024 | HUSQVARNA TC 125 2023 2024 2025 | HUSQVARNA TC 150 2025 | HUSQVARNA TC 250 2023 2024 2025 | HUSQVARNA TC 300 2025 | HUSQVARNA TX 300 2023 2024 2025

**FRONT NUMBER
PLATE**
0023541



0023541.030



0023541.031



0023541.040



0023541.090

APPLICATIONS

HUSQVARNA TC 65 2017 2018 2019 2020 2021 2022 2023

FRONT NUMBER
PLATE
0023524



0023524.030



0023524.072



0023524.092



0023524.132



0023524.031



0023524.070



0023524.083



0023524.090



0023524.234



0023524.486

APPLICATIONS

HUSQVARNA FC 250 2019 2020 2021 2022 | HUSQVARNA FC 350 2019 2020 2021 2022 | HUSQVARNA FC 450 2019 2020 2021 2022 |
HUSQVARNA FX 350 2020 2021 2022 | HUSQVARNA FX 450 2020 2021 2022 | HUSQVARNA TC 125 2019 2020 2021 2022 | HUSQVARNA TC
250 2019 2020 2021 2022 | HUSQVARNA TX 300 2020 2021 2022

**FRONT NUMBER
PLATE
0023041**



0023041.030



0023041.031



0023041.040



0023041.090

APPLICATIONS

HUSQVARNA TC 85 2018 2019 2020 2021 2022 2023 2024



**FRONT NUMBER
PLATE**
0022802



0022802.030



0022802.040



0022802.090

APPLICATIONS

HUSQVARNA TC 85 2014 2015 2016 2017

**FRONT NUMBER
PLATE**
0021826



0021826.030



0021826.041



0021826.061



0021826.090

APPLICATIONS

HUSQVARNA FC 250 2016 2017 2018 | HUSQVARNA FC 350 2016 2017 2018 | HUSQVARNA FC 450 2016 2017 2018 | HUSQVARNA TC 125 2016 2017 2018 | HUSQVARNA TC 250 2017 2018

**FRONT NUMBER
PLATE**
0017697



0017697.030



0017697.090

APPLICATIONS

HUSQVARNA FC 250 2014 2015 | HUSQVARNA FC 350 2014 2015 | HUSQVARNA FC 450 2014 2015 | HUSQVARNA TC 125 2014 2015 |
HUSQVARNA TC 250 2014 2015 2016



**HEADLIGHT MASK FOR
HUSQVARNA**
0026853



0026853.031



0026853.090

APPLICATIONS

HUSQVARNA FE 250 2024 2025 | HUSQVARNA FE 350 2024 2025 | HUSQVARNA FE 350 PRO 2024 2025 | HUSQVARNA FE 350 S 2024 2025 |
HUSQVARNA FE 450 2024 2025 | HUSQVARNA FE 501 2024 2025 | HUSQVARNA FE 501 S 2024 2025 | HUSQVARNA TE 125 2024 2025 |
HUSQVARNA TE 150 2024 2025 | HUSQVARNA TE 250 2024 2025 | HUSQVARNA TE 300 2024 2025 | HUSQVARNA TE 300 PRO 2024 2025

**BOTTOM HEADLIGHT
MASK FOR
HUSQVARNA**
0026856



0026856.031



0026856.062



0026856.090

APPLICATIONS

HUSQVARNA FE 250 2024 2025 | HUSQVARNA FE 350 2024 2025 | HUSQVARNA FE 350 PRO 2024 2025 | HUSQVARNA FE 350 S 2024 2025 |
HUSQVARNA FE 450 2024 2025 | HUSQVARNA FE 501 2024 2025 | HUSQVARNA FE 501 S 2024 2025 | HUSQVARNA TE 125 2024 2025 |
HUSQVARNA TE 150 2024 2025 | HUSQVARNA TE 250 2024 2025 | HUSQVARNA TE 300 2024 2025 | HUSQVARNA TE 300 PRO 2024 2025



HEADLIGHT MASK VSL
FOR HUSQVARNA
0023948



0023948.030

FEATURES

High energetic performance for OFFROAD use only.
Maximum brightness and depth of detail guaranteed, even in total dark situations.
IP68 waterproof: permanent impermeability up to 3 metres deep.
16 Led, 48W headlight.
4320 Lumen.
DC electrical supply from 9 to 32V.

Estimated led lifespan: 50000 hours.
Operating temperatures between between -40° and +85° C.
Easy and fast mounting, using the original headlight's rubber bands.
Developed for enduro KTM/HUSQVARNA bikes from 2017 to 2019

APPLICATIONS

HUSQVARNA FE 250 2017 2018 2019 | HUSQVARNA FE 350 2017 2018 2019 | HUSQVARNA FE 450 2017 2018 2019 | HUSQVARNA TE 250I 2018 2019 | HUSQVARNA TE 300I 2018 2019

**BOTTOM HEADLIGHT
MASK FOR
HUSQVARNA**
0024287



0024287.031



0024287.062



0024287.090

APPLICATIONS

HUSQVARNA FE 250 2020 2021 2022 2023 | HUSQVARNA FE 350 2020 2021 2022 2023 | HUSQVARNA FE 450 2020 2021 2022 2023 |
HUSQVARNA FE 501 2020 2021 2022 2023 | HUSQVARNA TE 250I 2020 2021 2022 2023 | HUSQVARNA TE 300I 2020 2021 2022 2023

PRODUCTS RELATED



0024049
HEADLIGHT MASK

031

090

HEADLIGHT MASK
0024049



0024049.031



0024049.090

APPLICATIONS

HUSQVARNA FE 250 2020 2021 2022 2023 | HUSQVARNA FE 350 2020 2021 2022 2023 | HUSQVARNA FE 350 S 2022 2023 | HUSQVARNA FE 450 2020 2021 2022 2023 | HUSQVARNA FE 501 2020 2021 2022 2023 | HUSQVARNA FE 501 S 2022 2023 | HUSQVARNA TE 150I 2020 2021 2022 2023 | HUSQVARNA TE 250I 2020 2021 2022 2023 | HUSQVARNA TE 300I 2020 2021 2022 2023

PRODUCTS RELATED



0024287
BOTTOM HEADLIGHT MASK
FOR HUSQVARNA

□ 031

■ 062

■ 090

HEADLIGHT MASK
0023426



0023426.030



0023426.040



0023426.062



0023426.070



0023426.090

APPLICATIONS

HUSQVARNA FE 250 2017 2018 2019 | HUSQVARNA FE 350 2017 2018 2019 | HUSQVARNA FE 450 2017 2018 2019 | HUSQVARNA FE 501 2017 2018 2019 | HUSQVARNA TE 250 2017 | HUSQVARNA TE 250I 2018 2019 | HUSQVARNA TE 300 2017 | HUSQVARNA TE 300I 2018 2019 | HUSQVARNA TX 125 2017 2018 2019

RADIATOR SCOOPS
0026930



0026930.031



0026930.090

FEATURES

Product compatible with the models shown in the application tab

APPLICATIONS

HUSQVARNA FC 250 2025 | HUSQVARNA FC 350 2025 | HUSQVARNA FC 450 2025 | HUSQVARNA FX 350 2025 | HUSQVARNA TC 125 2025 | HUSQVARNA TC 150 2025 | HUSQVARNA TC 250 2025 | HUSQVARNA TC 300 2025 | HUSQVARNA TX 300 2025



RADIATOR SCOOPS
0026848



0026848.031



0026848.071



0026848.090

FEATURES

Product compatible with the models shown in the application tab

APPLICATIONS

HUSQVARNA FC 250 2023 2024 | HUSQVARNA FC 350 2023 2024 | HUSQVARNA FC 450 2023 2024 | HUSQVARNA FE 250 2024 2025 |
HUSQVARNA FE 350 2024 2025 | HUSQVARNA FE 350 PRO 2024 2025 | HUSQVARNA FE 350 S 2024 2025 | HUSQVARNA FE 450 2024 2025 |
HUSQVARNA FE 501 2024 2025 | HUSQVARNA FE 501 S 2024 2025 | HUSQVARNA FX 350 2023 2024 | HUSQVARNA TC 125 2023 2024 |
HUSQVARNA TC 250 2023 2024 | HUSQVARNA TE 150 2024 2025 | HUSQVARNA TE 250 2024 2025 | HUSQVARNA TE 300 2024 2025 |
HUSQVARNA TE 300 PRO 2024 2025 | HUSQVARNA TX 300 2023 2024

RADIATOR SCOOPS
0023042



0023042.030



0023042.031



0023042.071



0023042.040



0023042.090

APPLICATIONS

HUSQVARNA TC 85 2018 2019 2020 2021 2022 2023 2024

RADIATOR SCOOPS
0023543



0023543.030



0023543.031



0023543.071



0023543.040



0023543.090

APPLICATIONS

HUSQVARNA TC 65 2017 2018 2019 2020 2021 2022 2023

RADIATOR SCOOPS
0023522



APPLICATIONS

HUSQVARNA FC 250 2019 2020 2021 2022 | HUSQVARNA FC 350 2019 2020 2021 2022 | HUSQVARNA FC 450 2019 2020 2021 2022 | HUSQVARNA FE 250 2020 2021 2022 2023 | HUSQVARNA FE 350 2020 2021 2022 2023 | HUSQVARNA FE 350 S 2022 2023 | HUSQVARNA FE 450 2020 2021 2022 2023 | HUSQVARNA FE 501 2020 2021 2022 2023 | HUSQVARNA FE 501 S 2022 2023 | HUSQVARNA FS 450 2019 2020 | HUSQVARNA FX 350 2020 2021 2022 | HUSQVARNA FX 450 2020 2021 2022 | HUSQVARNA TC 125 2019 2020 2021 2022 | HUSQVARNA TC 250 2019 2020 2021 2022 | HUSQVARNA TE 150I 2020 2021 2022 2023 | HUSQVARNA TE 250I 2020 2021 2022 2023 | HUSQVARNA TE 300I 2020 2021 2022 2023 | HUSQVARNA TX 300 2020 2021 2022

RADIATOR SCOOPS
0013090



0013090.110

APPLICATIONS

HUSQVARNA CR 250 2T 2008 | HUSQVARNA TC 250 2008 | HUSQVARNA WR 125 2T 2008 | HUSQVARNA WR 250 2T 2008

RADIATOR SCOOPS
0022803



0022803.030



0022803.040

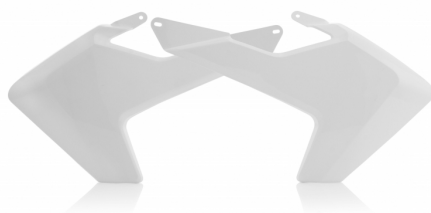


0022803.090

APPLICATIONS

HUSQVARNA TC 85 2014 2015 2016 2017

RADIATOR SCOOPS
0021827



0021827.030



0021827.040



0021827.041



0021827.070



0021827.090

APPLICATIONS

HUSQVARNA FC 250 2016 2017 2018 | HUSQVARNA FC 350 2016 2017 2018 | HUSQVARNA FC 450 2016 2017 2018 | HUSQVARNA FE 250 2017 2018 2019 | HUSQVARNA FE 350 2017 2018 2019 | HUSQVARNA FE 450 2017 2018 2019 | HUSQVARNA FE 501 2017 2018 2019 | HUSQVARNA TC 125 2016 2017 2018 | HUSQVARNA TC 250 2017 2018 | HUSQVARNA TE 250 2017 | HUSQVARNA TE 250I 2018 2019 | HUSQVARNA TE 300 2017 | HUSQVARNA TE 300I 2018 2019 | HUSQVARNA TX 125 2017 2018 2019

RADIATOR SCOOPS
0017698



0017698.030



0017698.090



0017698.234



0017698.248

FEATURES

All Acerbis replica plastic has the original factory shape of the OEM plastic of each specific model.

APPLICATIONS

HUSABERG FE 250 2013 2014 | HUSABERG FE 350 2013 2014 | HUSABERG FE 450 2013 2014 | HUSABERG TE 125 2013 2014 | HUSABERG TE 250 2013 2014 | HUSABERG TE 300 2013 2014 | HUSQVARNA FC 250 2014 2015 | HUSQVARNA FC 350 2014 2015 | HUSQVARNA FC 450 2014 2015 | HUSQVARNA FE 250 2014 2015 2016 | HUSQVARNA FE 350 2014 2015 2016 | HUSQVARNA FE 450 2014 2015 2016 | HUSQVARNA FE 501 2014 2015 2016 | HUSQVARNA TC 125 2014 2015 | HUSQVARNA TC 250 2014 2015 2016 | HUSQVARNA TE 125 2014 2015 2016 | HUSQVARNA TE 250 2014 2015 2016 | HUSQVARNA TE 300 2014 2015 2016

RADIATOR LOUVERS
FOR KTM /
HUSQVARNA
0024002



0024002.011.016



0024002.030



0024002.090

APPLICATIONS

HUSQVARNA FC 250 2019 2020 2021 2022 | HUSQVARNA FC 350 2019 2020 2021 2022 | HUSQVARNA FC 450 2019 2020 2021 2022 | HUSQVARNA FE 250 2020 2021 2022 2023 | HUSQVARNA FE 350 2020 2021 2022 2023 | HUSQVARNA FE 350 PRO 2024 | HUSQVARNA FE 350 S 2022 2023 | HUSQVARNA FE 450 2020 2021 2022 2023 | HUSQVARNA FE 501 2020 2021 2022 2023 | HUSQVARNA FE 501 S 2022 2023 | HUSQVARNA FX 350 2020 2021 2022 | HUSQVARNA FX 450 2020 2021 2022 | HUSQVARNA TC 125 2019 2020 2021 2022 | HUSQVARNA TC 250 2019 2020 2021 2022 | HUSQVARNA TE 150I 2020 2021 2022 2023 | HUSQVARNA TE 250I 2020 2021 2022 2023 | HUSQVARNA TE 300I 2020 2021 2022 2023 | HUSQVARNA TX 300 2020 2021 2022 | KTM EXC 150 TPI 2020 2021 2022 2023 | KTM EXC 250 TPI 2020 2021 2022 2023 | KTM EXC 300 TPI 2020 2021 2022 2023 | KTM EXC-F 250 2020 2021 2022 2023 | KTM EXC-F 350 2020 2021 2022 2023 | KTM EXC-F 450 2020 2021 2022 2023 | KTM EXC-F 500 2020 2021 2022 2023 | KTM SX 125 2019 2020 2021 2022 | KTM SX 150 2019 2020 | KTM SX 250 2019 2020 2021 2022 | KTM SX-F 250 2019 2020 2021 2022 | KTM SX-F 350 2019 2020 2021 2022 | KTM SX-F 450 2019 2020 2021 2022 | KTM XC 250 TPI 2020 2021 2022 | KTM XC 300 TPI 2020 2021 2022 | KTM XC-F 250 2020 2021 2022 | KTM XC-F 350 2020 2021 2022 | KTM XC-F 450 2020 2021 2022 | KTM XC-W 250 TPI 2020 2021 2022 2023 | KTM XC-W 300 TPI 2020 2021 2022 2023 | KTM XCF-W 350 2020 2021 2022 2023 | KTM XCF-W 450 2023 | KTM XCF-W 500 2020 2021 2022 2023

PRODUCTS RELATED



0023600
X-GRIP FOR HUSQVARNA
FRAME PROTECTOR

- 249
- 293
- 315
- 319
- 349
- 726
- 878

**RADIATOR LOUVERS
FOR KTM /
HUSQVARNA
0023311**



0023311.011.016



0023311.030



0023311.041



0023311.090

APPLICATIONS

HUSQVARNA FC 250 2016 2017 2018 | HUSQVARNA FC 350 2016 2017 2018 | HUSQVARNA FC 450 2016 2017 2018 | HUSQVARNA FE 250 2017 2018 2019 | HUSQVARNA FE 350 2017 2018 2019 | HUSQVARNA FE 450 2017 2018 2019 | HUSQVARNA FE 501 2017 2018 2019 | HUSQVARNA TC 125 2016 2017 2018 | HUSQVARNA TC 250 2017 2018 | HUSQVARNA TE 250 2017 | HUSQVARNA TE 250I 2018 2019 | HUSQVARNA TE 300 2017 | HUSQVARNA TE 300I 2018 2019 | HUSQVARNA TX 125 2017 2018 2019 | KTM EXC 250 2017 | KTM EXC 250 TPI 2018 2019 | KTM EXC 300 2017 | KTM EXC 300 TPI 2018 2019 | KTM EXC-F 250 2017 2018 2019 | KTM EXC-F 350 2017 2018 2019 | KTM EXC-F 450 2017 2018 2019 | KTM EXC-F 500 2017 2018 2019 | KTM SX 125 2016 2017 2018 | KTM SX 150 2016 2017 2018 | KTM SX 250 2017 2018 | KTM SX-F 250 2016 2017 2018 | KTM SX-F 350 2016 2017 2018 | KTM SX-F 450 2016 2017 2018 | KTM XC-W 125 2017 2018 2019 | KTM XC-W 150 TPI 2019 | KTM XC-W 250 TPI 2019 | KTM XC-W 300 TPI 2019

SIDE PANELS
0026931



0026931.031



0026931.090

FEATURES

Product compatible with the models shown in the application tab

APPLICATIONS

HUSQVARNA FC 250 2025 | HUSQVARNA FC 350 2025 | HUSQVARNA FC 450 2025 | HUSQVARNA FX 350 2025 | HUSQVARNA TC 125 2025 |
HUSQVARNA TC 150 2025 | HUSQVARNA TC 250 2025 | HUSQVARNA TC 300 2025 | HUSQVARNA TX 300 2025

SIDE PANELS
0025450



0025450.031



0025450.090

APPLICATIONS

HUSQVARNA FC 250 2023 2024 | HUSQVARNA FC 350 2023 2024 | HUSQVARNA FC 450 2023 2024 | HUSQVARNA FE 250 2024 2025 |
HUSQVARNA FE 350 2024 2025 | HUSQVARNA FE 350 PRO 2024 2025 | HUSQVARNA FE 350 S 2024 2025 | HUSQVARNA FE 450 2024 2025 |
HUSQVARNA FE 501 2024 2025 | HUSQVARNA FE 501 S 2024 2025 | HUSQVARNA FX 350 2023 2024 | HUSQVARNA FX 450 2023 2024 |
HUSQVARNA TC 125 2023 2024 | HUSQVARNA TC 250 2023 2024 | HUSQVARNA TE 125 2024 2025 | HUSQVARNA TE 150 2024 2025 |
HUSQVARNA TE 250 2024 2025 | HUSQVARNA TE 300 2024 2025 | HUSQVARNA TE 300 PRO 2024 2025 | HUSQVARNA TX 300 2023 2024



**SHOCK ABSORBER
COVER**
0025452



0025452.031



0025452.090

APPLICATIONS

HUSQVARNA FC 250 2023 2024 | HUSQVARNA FC 350 2023 2024 | HUSQVARNA FC 450 2023 2024 | HUSQVARNA FE 250 2024 2025 |
HUSQVARNA FE 350 2024 2025 | HUSQVARNA FE 350 PRO 2024 2025 | HUSQVARNA FE 350 S 2024 2025 | HUSQVARNA FE 450 2024 2025 |
HUSQVARNA FE 501 2024 2025 | HUSQVARNA FE 501 S 2024 2025 | HUSQVARNA FX 350 2023 2024 | HUSQVARNA FX 450 2023 2024 |
HUSQVARNA TC 125 2023 2024 | HUSQVARNA TC 250 2023 2024 | HUSQVARNA TE 125 2024 2025 | HUSQVARNA TE 150 2024 2025 |
HUSQVARNA TE 250 2024 2025 | HUSQVARNA TE 300 2024 2025 | HUSQVARNA TE 300 PRO 2024 2025 | HUSQVARNA TX 300 2023 2024

**RUBBER INSERT FOR
SIDE PANELS**
0023710



0023710.090

PRODUCTS RELATED



0023523
SIDE PANELS

- | | |
|------------------------------|------------------------------|
| <input type="checkbox"/> 030 | <input type="checkbox"/> 031 |
| <input type="checkbox"/> 070 | <input type="checkbox"/> 072 |
| <input type="checkbox"/> 083 | <input type="checkbox"/> 090 |
| <input type="checkbox"/> 092 | <input type="checkbox"/> 132 |
| <input type="checkbox"/> 235 | <input type="checkbox"/> 237 |

SIDE PANELS VENTED
0024263



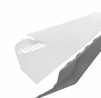
0024263.030



0024263.031



0024263.090

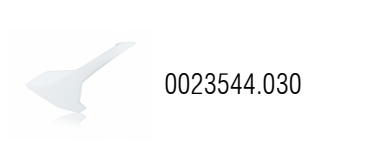


0024263.235

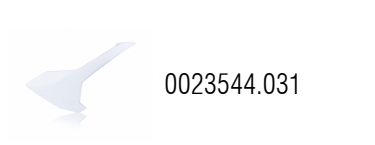
APPLICATIONS

HUSQVARNA FC 250 2019 2020 2021 2022 | HUSQVARNA FC 350 2019 2020 2021 2022 | HUSQVARNA FC 450 2019 2020 2021 2022 | HUSQVARNA FE 250 2020 2021 2022 2023 | HUSQVARNA FE 350 2020 2021 2022 2023 | HUSQVARNA FE 350 S 2022 2023 | HUSQVARNA FE 450 2020 2021 2022 2023 | HUSQVARNA FE 501 2020 2021 2022 2023 | HUSQVARNA FE 501 S 2022 2023 | HUSQVARNA FX 350 2020 2021 2022 | HUSQVARNA FX 450 2020 2021 2022 | HUSQVARNA TC 125 2019 2020 2021 2022 | HUSQVARNA TC 250 2019 2020 2021 2022 | HUSQVARNA TE 150I 2020 2021 2022 2023 | HUSQVARNA TE 250I 2020 2021 2022 2023 | HUSQVARNA TE 300I 2020 2021 2022 2023 | HUSQVARNA TX 300 2020 2021 2022

SIDE PANELS
0023544



0023544.030



0023544.031



0023544.040



0023544.090

APPLICATIONS

HUSQVARNA TC 65 2017 2018 2019 2020 2021 2022

SIDE PANELS
0023523



0023523.031



0023523.072



0023523.092



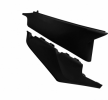
0023523.132



0023523.030



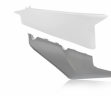
0023523.083



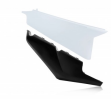
0023523.090



0023523.070



0023523.235



0023523.237

APPLICATIONS

HUSQVARNA FC 250 2019 2020 2021 2022 | HUSQVARNA FC 350 2019 2020 2021 2022 | HUSQVARNA FC 450 2019 2020 2021 2022 | HUSQVARNA FE 250 2020 2021 2022 2023 | HUSQVARNA FE 350 2020 2021 2022 2023 | HUSQVARNA FE 350 S 2022 2023 | HUSQVARNA FE 450 2020 2021 2022 2023 | HUSQVARNA FE 501 2020 2021 2022 2023 | HUSQVARNA FE 501 S 2022 2023 | HUSQVARNA FX 350 2020 2021 2022 | HUSQVARNA FX 450 2020 2021 2022 | HUSQVARNA TC 125 2019 2020 2021 2022 | HUSQVARNA TC 250 2019 2020 2021 2022 | HUSQVARNA TE 150I 2020 2021 2022 2023 | HUSQVARNA TE 250I 2020 2021 2022 2023 | HUSQVARNA TE 300I 2020 2021 2022 2023 | HUSQVARNA TX 300 2020 2021 2022

PRODUCTS RELATED



0023710
RUBBER INSERT FOR SIDE
PANELS

■ 090

SIDE PANELS
0023043



0023043.030



0023043.031



0023043.040

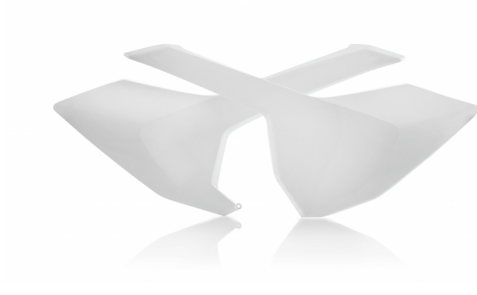


0023043.090

APPLICATIONS

HUSQVARNA TC 85 2018 2019 2020 2021 2022 2023 2024

SIDE PANELS
0021828



0021828.030



0021828.040



0021828.041



0021828.090



0021828.061



0021828.070



0021828.133

APPLICATIONS

HUSQVARNA FC 250 2016 2017 2018 | HUSQVARNA FC 350 2016 2017 2018 | HUSQVARNA FC 450 2016 2017 2018 | HUSQVARNA FE 250 2017 2018 2019 | HUSQVARNA FE 350 2017 2018 2019 | HUSQVARNA FE 450 2017 2018 2019 | HUSQVARNA FE 501 2017 2018 2019 | HUSQVARNA TC 125 2016 2017 2018 | HUSQVARNA TC 250 2017 2018 | HUSQVARNA TE 250 2017 | HUSQVARNA TE 250I 2018 2019 | HUSQVARNA TE 300 2017 | HUSQVARNA TE 300I 2018 2019 | HUSQVARNA TX 125 2017 2018 2019

SIDE PANELS
0017699



0017699.030



0017699.090

APPLICATIONS

HUSABERG FE 250 2013 2014 | HUSABERG FE 350 2013 2014 | HUSABERG FE 450 2013 2014 | HUSABERG TE 125 2013 2014 | HUSABERG TE 250 2013 2014 | HUSABERG TE 300 2013 2014 | HUSQVARNA FC 250 2014 2015 | HUSQVARNA FC 350 2014 2015 | HUSQVARNA FC 450 2014 2015 | HUSQVARNA FE 250 2014 2015 2016 | HUSQVARNA FE 350 2014 2015 2016 | HUSQVARNA FE 450 2014 2015 2016 | HUSQVARNA FE 501 2014 2015 2016 | HUSQVARNA TC 125 2014 2015 | HUSQVARNA TC 250 2014 2016 | HUSQVARNA TE 125 2014 2015 2016 | HUSQVARNA TE 250 2014 2015 2016 | HUSQVARNA TE 300 2014 2015 2016



AIR BOX COVER
0026932



0026932.031



0026932.090

FEATURES

Product compatible with the models shown in the application tab

APPLICATIONS

HUSQVARNA FC 250 2025 | HUSQVARNA FC 350 2025 | HUSQVARNA FC 450 2025 | HUSQVARNA FX 350 2025 | HUSQVARNA TC 125 2025 | HUSQVARNA TC 150 2025 | HUSQVARNA TC 250 2025 | HUSQVARNA TC 300 2025 | HUSQVARNA TX 300 2025



AIR BOX COVER
0025451



0025451.031



0025451.090

APPLICATIONS

HUSQVARNA FC 250 2023 2024 | HUSQVARNA FC 350 2023 2024 | HUSQVARNA FC 450 2023 2024 | HUSQVARNA FE 250 2024 2025 |
HUSQVARNA FE 350 2024 2025 | HUSQVARNA FE 350 PRO 2024 2025 | HUSQVARNA FE 350 S 2024 2025 | HUSQVARNA FE 450 2024 2025 |
HUSQVARNA FE 501 2024 2025 | HUSQVARNA FE 501 S 2024 2025 | HUSQVARNA FX 350 2023 2024 | HUSQVARNA FX 450 2023 2024 |
HUSQVARNA TC 125 2023 2024 | HUSQVARNA TC 250 2023 2024 | HUSQVARNA TE 125 2024 2025 | HUSQVARNA TE 150 2024 2025 |
HUSQVARNA TE 250 2024 2025 | HUSQVARNA TE 300 2024 2025 | HUSQVARNA TE 300 PRO 2024 2025 | HUSQVARNA TX 300 2023 2024

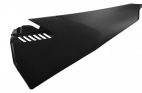
**AIR BOX COVER
VENTED**
0024327



0024327.030



0024327.031



0024327.090

APPLICATIONS

HUSQVARNA FC 250 2019 2020 2021 2022 | HUSQVARNA FC 350 2019 2020 2021 2022 | HUSQVARNA FC 450 2019 2020 2021 2022 | HUSQVARNA FE 250 2020 2021 2022 2023 | HUSQVARNA FE 350 2020 2021 2022 2023 | HUSQVARNA FE 350 S 2022 2023 | HUSQVARNA FE 450 2020 2021 2022 2023 | HUSQVARNA FE 501 2020 2021 2022 2023 | HUSQVARNA FE 501 S 2022 2023 | HUSQVARNA FX 350 2020 2021 2022 | HUSQVARNA FX 450 2020 2021 2022 | HUSQVARNA TC 125 2019 2020 2021 2022 | HUSQVARNA TC 250 2019 2020 2021 2022 | HUSQVARNA TE 150I 2020 2021 2022 2023 | HUSQVARNA TE 250I 2020 2021 2022 2023 | HUSQVARNA TE 300I 2020 2021 2022 2023 | HUSQVARNA TX 300 2020 2021 2022

AIR BOX COVER
0022806



0022806.030



0022806.040



0022806.090

APPLICATIONS

HUSQVARNA TC 85 2014 2015 2016 2017



REAR FENDER
0026852



0026852.031



0026852.062



0026852.090

FEATURES

Product compatible with the models shown in the application tab

APPLICATIONS

HUSQVARNA FE 250 2024 2025 | HUSQVARNA FE 350 2024 2025 | HUSQVARNA FE 350 PRO 2024 2025 | HUSQVARNA FE 350 S 2024 2025 |
HUSQVARNA FE 501 2024 2025 | HUSQVARNA FE 501 S 2024 2025 | HUSQVARNA TE 125 2024 2025 | HUSQVARNA TE 150 2024 2025 |
HUSQVARNA TE 250 2024 2025 | HUSQVARNA TE 300 2024 2025 | HUSQVARNA TE 300 PRO 2024 2025



REAR FENDER
0026849



0026849.031



0026849.062



0026849.090

FEATURES

Product compatible with the models shown in the application tab

APPLICATIONS

HUSQVARNA FC 250 2023 2024 2025 | HUSQVARNA FC 350 2023 2024 2025 | HUSQVARNA FC 450 2023 2024 2025 | HUSQVARNA FX 350 2023 2024 2025 | HUSQVARNA TC 125 2023 2024 2025 | HUSQVARNA TC 150 2025 | HUSQVARNA TC 250 2023 2024 2025 | HUSQVARNA TC 300 2025 | HUSQVARNA TX 300 2023 2024 2025

REAR FENDER
0024048



0024048.031



0024048.062



0024048.090

APPLICATIONS

HUSQVARNA FE 250 2020 2021 2022 2023 | HUSQVARNA FE 350 2020 2021 2022 2023 | HUSQVARNA FE 350 S 2022 2023 | HUSQVARNA FE 450 2020 2021 2022 2023 | HUSQVARNA FE 501 2020 2021 2022 2023 | HUSQVARNA FE 501 S 2022 2023 | HUSQVARNA TE 150I 2020 2021 2022 2023 | HUSQVARNA TE 250I 2020 2021 2022 2023 | HUSQVARNA TE 300I 2020 2021 2022 2023

REAR FENDER
0023545



0023545.030



0023545.031



0023545.040



0023545.090



0023545.062

APPLICATIONS

HUSQVARNA TC 65 2017 2018 2019 2020 2021 2022 2023

REAR FENDER
0023525



0023525.030



0023525.072



0023525.092



0023525.132



0023525.031



0023525.062



0023525.070



0023525.083



0023525.090

APPLICATIONS

HUSQVARNA FC 250 2019 2020 2021 2022 | HUSQVARNA FC 350 2019 2020 2021 2022 | HUSQVARNA FC 450 2019 2020 2021 2022 | HUSQVARNA FX 350 2020 2021 2022 | HUSQVARNA FX 450 2020 2021 2022 | HUSQVARNA TC 125 2019 2020 2021 2022 | HUSQVARNA TC 250 2019 2020 2021 2022 | HUSQVARNA TX 300 2020 2021 2022

REAR FENDER
0023044



0023044.030



0023044.031



0023044.062



0023044.040



0023044.090

APPLICATIONS

HUSQVARNA TC 85 2018 2019 2020 2021 2022 2023 2024



REAR FENDER
0022804



0022804.030



0022804.040



0022804.090

APPLICATIONS

HUSQVARNA TC 85 2014 2015 2016 2017

REAR FENDER
0022373



0022373.030



0022373.040



0022373.070



0022373.090

APPLICATIONS

HUSQVARNA FE 250 2017 2018 2019 | HUSQVARNA FE 350 2017 2018 2019 | HUSQVARNA FE 450 2017 2018 2019 | HUSQVARNA FE 501 2017 2018 2019 | HUSQVARNA TE 250 2017 | HUSQVARNA TE 250I 2018 2019 | HUSQVARNA TE 300 2017 | HUSQVARNA TE 300I 2018 2019 | HUSQVARNA TX 125 2017 2018 2019

REAR FENDER
0021829



0021829.030



0021829.040



0021829.041



0021829.061



0021829.090



0021829.133

APPLICATIONS

HUSQVARNA FC 250 2016 2017 2018 | HUSQVARNA FC 350 2016 2017 2018 | HUSQVARNA FC 450 2016 2017 2018 | HUSQVARNA TC 125 2016 2017 2018 | HUSQVARNA TC 250 2017 2018

REAR FENDER
0017696



0017696.030



0017696.090

APPLICATIONS

HUSABERG FE 250 2013 2014 | HUSABERG FE 350 2013 2014 | HUSABERG FE 450 2013 2014 | HUSABERG TE 125 2013 2014 | HUSABERG TE 250 2013 2014 | HUSABERG TE 300 2013 2014 | HUSQVARNA FC 250 2014 2015 | HUSQVARNA FC 350 2014 2015 | HUSQVARNA FC 450 2014 2015 | HUSQVARNA FE 250 2014 2015 2016 | HUSQVARNA FE 350 2014 2015 2016 | HUSQVARNA FE 450 2014 2015 2016 | HUSQVARNA FE 501 2014 2015 2016 | HUSQVARNA TC 125 2014 2015 | HUSQVARNA TC 250 2014 2015 2016 | HUSQVARNA TE 125 2014 2015 2016 | HUSQVARNA TE 250 2014 2015 2016 | HUSQVARNA TE 300 2014 2015 2016

LOWER FORK COVER
0025455



0025455.031



0025455.062



0025455.090



0025455.040

APPLICATIONS

HUSQVARNA FC 250 2023 2024 2025 | HUSQVARNA FC 350 2023 2024 2025 | HUSQVARNA FC 450 2023 2024 2025 | HUSQVARNA FE 250 2024 2025 | HUSQVARNA FE 350 2024 2025 | HUSQVARNA FE 350 PRO 2024 2025 | HUSQVARNA FE 350 S 2024 2025 | HUSQVARNA FE 450 2024 2025 | HUSQVARNA FE 501 2024 2025 | HUSQVARNA FE 501 S 2024 2025 | HUSQVARNA FX 350 2023 2024 2025 | HUSQVARNA FX 450 2023 2024 | HUSQVARNA TC 125 2023 2024 2025 | HUSQVARNA TC 150 2025 | HUSQVARNA TC 250 2023 2024 2025 | HUSQVARNA TC 300 2025 | HUSQVARNA TE 125 2024 2025 | HUSQVARNA TE 150 2024 2025 | HUSQVARNA TE 250 2024 2025 | HUSQVARNA TE 300 2024 2025 | HUSQVARNA TE 300 PRO 2024 2025 | HUSQVARNA TX 300 2023 2024 2025

LOWER FORK COVER
0023542



0023542.030



0023542.031



0023542.040



0023542.062



0023542.090

APPLICATIONS

HUSQVARNA EE 5 2025 | HUSQVARNA TC 50 2024 2025 | HUSQVARNA TC 65 2017 2018 2019 2020 2021 2022 2023 2024 2025



LOWER FORK COVER
0023045



0023045.011.016



0023045.014



0023045.072



0023045.132



0023045.092



0023045.030



0023045.031



0023045.032



0023045.040



0023045.041



0023045.062



0023045.090



0023045.110

GAS GAS / LOWER FORK COVERS
LOWER FORK COVER



APPLICATIONS

GAS GAS MC 85 2021 2022 2023 2024 2025 | HUSQVARNA TC 85 2018 2019 2020 2021 2022 2023 2024 2025 | KTM SX 85 2018 2019 2020 2021 2022 2023 2024 2025



LOWER FORK COVER
0022805



0022805.040



0022805.060



0022805.090

APPLICATIONS

HUSQVARNA TC 85 2014 2015 2016 2017

SIZES

16 016



LOWER FORK COVER
0022288



0022288.030



0022288.031



0022288.072



0022288.132



0022288.092



0022288.040



0022288.041



0022288.060



0022288.062



0022288.070



0022288.071



0022288.083



0022288.090

APPLICATIONS

HUSQVARNA FC 250 2016 2017 2018 2019 2020 2021 2022 | HUSQVARNA FC 350 2016 2017 2018 2019 2020 2021 2022 | HUSQVARNA FC 450 2016 2017 2018 2019 2020 2021 2022 | HUSQVARNA FE 250 2016 2017 2018 2019 2020 2021 2022 2023 | HUSQVARNA FE 350 2016 2017 2018 2019 2020 2021 2022 2023 | HUSQVARNA FE 350 S 2022 2023 | HUSQVARNA FE 450 2016 2017 2018 2019 2020 2021 2022 2023 | HUSQVARNA FE 501 2016 2017 2018 2019 2020 2021 2022 2023 | HUSQVARNA FE 501 S 2022 2023 | HUSQVARNA FX 350 2020 2021 2022 | HUSQVARNA FX 450 2020 2021 2022 | HUSQVARNA TC 125 2016 2017 2018 2019 2020 2021 2022 | HUSQVARNA TC 250 2016 2017 2018 2019 2020 2021 2022 | HUSQVARNA TE 125 2016 | HUSQVARNA TE 150I 2020 2021 2022 2023 | HUSQVARNA TE 250 2016 2017 | HUSQVARNA TE 250I 2018 2019 2020 2021 2022 2023 | HUSQVARNA TE 300 2016 2017 | HUSQVARNA TE 300I 2018 2019 2020 2021 2022 2023 | HUSQVARNA TX 125 2017 2018 2019 | HUSQVARNA TX 300 2020 2021 2022



LOWER FORK COVER
0011649



0011649.010



0011649.030



0011649.060



0011649.090

APPLICATIONS

HUSQVARNA FC 250 2014 | HUSQVARNA FC 350 2014 | HUSQVARNA FC 450 2014 | HUSQVARNA FE 250 2014 2015 | HUSQVARNA FE 350 2014 2015 | HUSQVARNA FE 450 2014 2015 | HUSQVARNA FE 501 2014 2015 | HUSQVARNA TC 125 2014 | HUSQVARNA TC 250 2014 | HUSQVARNA TC 300 2014 | HUSQVARNA TE 125 2014 2015 | HUSQVARNA TE 250 2014 2015 | HUSQVARNA TE 300 2014 2015 | KTM EXC 125 2008 2009 2010 2011 2012 2013 2014 2015 | KTM EXC 200 2008 2009 2010 2011 2012 2013 2014 2015 | KTM EXC 250 2008 2009 2010 2011 2012 2013 2014 2015 | KTM EXC 300 2008 2009 2010 2011 2012 2013 2014 2015 | KTM EXC-F 250 2008 2009 2010 2011 2012 2013 2014 2015 | KTM EXC-F 350 2012 2013 2014 2015 | KTM EXC-F 400 2008 2009 2010 2011 | KTM EXC-F 450 2008 2009 2010 2011 2012 2013 2014 2015 | KTM EXC-F 500 2008 2009 2010 2011 2012 2013 2014 2015 | KTM EXC-F 530 2008 2009 2010 2011 | KTM SX 125 2008 2009 2010 2011 2012 2013 2014 | KTM SX 150 2011 2012 2013 2014 | KTM SX 250 2008 2009 2010 2011 2012 2013 2014 | KTM SX-F 250 2011 2012 2013 2014 | KTM SX-F 350 2011 2012 2013 2014 | KTM SX-F 450 2008 2009 2010 2011 2012 2013 2014 | KTM SX-F 505 2008

SIZES

16 016

PLASTIC KIT
COMPATIBLE FOR
HUSQVARNA
0026933



0026933.031



0026933.090



0026933.553

FEATURES

Product compatible with the models shown in the application tab

APPLICATIONS

HUSQVARNA FC 250 2025 | HUSQVARNA FC 350 2025 | HUSQVARNA FC 450 2025 | HUSQVARNA FX 350 2025 | HUSQVARNA TC 125 2025 | HUSQVARNA TC 150 2025 | HUSQVARNA TC 250 2025 | HUSQVARNA TC 300 2025 | HUSQVARNA TX 300 2025

PLASTIC KIT
COMPATIBLE FOR
HUSQVARNA
0026854



0026854.031



0026854.090



0026854.553.024



0026854.553.025

FEATURES

Product compatible with the models shown in the application tab

APPLICATIONS

HUSQVARNA FE 250 2024 2025 | HUSQVARNA FE 350 2024 2025 | HUSQVARNA FE 350 PRO 2024 2025 | HUSQVARNA FE 350 S 2025 |
HUSQVARNA FE 450 2024 2025 | HUSQVARNA FE 501 2024 2025 | HUSQVARNA FE 501 S 2024 2025 | HUSQVARNA TE 125 2024 2025 |
HUSQVARNA TE 150 2024 2025 | HUSQVARNA TE 250 2024 2025 | HUSQVARNA TE 300 2024 2025 | HUSQVARNA TE 300 PRO 2024 2025

PLASTIC KIT
COMPATIBLE FOR
HUSQVARNA
0026850



0026850.031



0026850.090



0026850.553.023



0026850.553.024

FEATURES

Product compatible with the models shown in the application tab

APPLICATIONS

HUSQVARNA FC 250 2023 2024 | HUSQVARNA FC 350 2023 2024 | HUSQVARNA FC 450 2023 2024 | HUSQVARNA FX 350 2023 2024 |
HUSQVARNA TC 125 2023 2024 | HUSQVARNA TC 250 2023 2024 | HUSQVARNA TX 300 2023 2024

PLASTIC KIT
0024052



0024052.031



0024052.090



0024052.553



0024052.553.022



0024052.553.023

APPLICATIONS

HUSQVARNA FE 250 2020 2021 2022 2023 | HUSQVARNA FE 350 2020 2021 2022 2023 | HUSQVARNA FE 350 S 2022 2023 | HUSQVARNA FE 450 2020 2021 2022 2023 | HUSQVARNA FE 501 2020 2021 2022 2023 | HUSQVARNA FE 501 S 2022 2023 | HUSQVARNA TE 150I 2020 2021 2022 2023 | HUSQVARNA TE 250I 2020 2021 2022 2023 | HUSQVARNA TE 300I 2020 2021 2022 2023

PLASTIC KIT
0023539



0023539.030



0023539.031



0023539.040



0023539.090



0023539.553



0023539.553.020



0023539.553.023

APPLICATIONS

HUSQVARNA TC 65 2017 2018 2019 2020 2021 2022 2023

PLASTIC KIT
0023482



0023482.030



0023482.031



0023482.072



0023482.092



0023482.132



0023482.070



0023482.090



0023482.237



0023482.553



0023482.553.020



0023482.553.022

APPLICATIONS

HUSQVARNA FC 250 2019 2020 2021 2022 | HUSQVARNA FC 350 2019 2020 2021 2022 | HUSQVARNA FC 450 2019 2020 2021 2022 | HUSQVARNA FX 350 2020 2021 2022 | HUSQVARNA FX 450 2020 2021 2022 | HUSQVARNA TC 125 2019 2020 2021 2022 | HUSQVARNA TC 250 2019 2020 2021 2022 | HUSQVARNA TX 300 2020 2021 2022

PLASTIC KIT
0023055



0023055.030



0023055.031



0023055.040



0023055.090



0023055.553



0023055.553.020



0023055.553.023

APPLICATIONS

HUSQVARNA TC 85 2018 2019 2020 2021 2022 2023 2024

PLASTIC KIT
0022807



0022807.040



0022807.090

APPLICATIONS

HUSQVARNA TC 85 2014 2015 2016 2017

PLASTIC KIT
0022374



0022374.030



0022374.040



0022374.070



0022374.090



0022374.553



0022374.553.018



0022374.553.019

FEATURES

All Acerbis replica plastic has the original factory shape of the OEM plastic of each specific model.

APPLICATIONS

HUSQVARNA FE 250 2017 2018 2019 | HUSQVARNA FE 350 2017 2018 2019 | HUSQVARNA FE 450 2017 2018 2019 | HUSQVARNA FE 501 2017 2018 2019 | HUSQVARNA TE 250 2017 | HUSQVARNA TE 250I 2018 2019 | HUSQVARNA TE 300 2017 | HUSQVARNA TE 300I 2018 2019 | HUSQVARNA TX 125 2017 2018 2019

PLASTIC KIT
0021830



0021830.030



0021830.041



0021830.090



0021830.553



0021830.553.017



0021830.553.018

APPLICATIONS

HUSQVARNA FC 250 2016 2017 2018 | HUSQVARNA FC 350 2016 2017 2018 | HUSQVARNA FC 450 2016 2017 2018 | HUSQVARNA TC 125 2016 2017 2018 | HUSQVARNA TC 250 2017 2018 | HUSQVARNA TC 300 2016 2017 2018

PLASTIC KIT
0017704



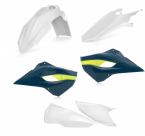
0017704.090



0017704.553



0017704.553.015



0017704.553.016

APPLICATIONS

HUSQVARNA FC 250 2014 2015 | HUSQVARNA FC 350 2014 2015 | HUSQVARNA FC 450 2014 2015 | HUSQVARNA TC 125 2014 2015 |
HUSQVARNA TC 250 2014 2015 2016

PLASTIC KIT
0017703



0017703.090



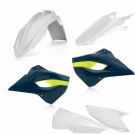
0017703.090.015



0017703.553



0017703.553.015



0017703.553.016

APPLICATIONS

HUSABERG FE 250 2013 2014 | HUSABERG FE 350 2013 2014 | HUSABERG FE 450 2013 2014 | HUSABERG TE 125 2013 2014 | HUSABERG TE 250 2013 2014 | HUSABERG TE 300 2013 2014 | HUSQVARNA FE 250 2014 2015 2016 | HUSQVARNA FE 350 2014 2015 2016 | HUSQVARNA FE 450 2014 2015 2016 | HUSQVARNA FE 501 2014 2015 2016 | HUSQVARNA TE 125 2014 2015 2016 | HUSQVARNA TE 250 2014 2015 2016 | HUSQVARNA TE 300 2014 2015 2016

NEW PRODUCTS / NEW PRODUCTS
FULL PLASTIC KIT COMPATIBLE FOR HUSQVARNA



**FULL PLASTIC KIT
COMPATIBLE FOR
HUSQVARNA**
0026934



0026934.031



0026934.090



0026934.553

FEATURES

Product compatible with the models shown in the application tab

APPLICATIONS

HUSQVARNA FC 250 2025 | HUSQVARNA FC 350 2025 | HUSQVARNA FC 450 2025 | HUSQVARNA FX 350 2025 | HUSQVARNA TC 125 2025 |
HUSQVARNA TC 150 2025 | HUSQVARNA TC 250 2025 | HUSQVARNA TC 300 2025 | HUSQVARNA TX 300 2025

HUSQVARNA / FULL PLASTIC KIT
FULL PLASTIC KIT COMPATIBLE FOR HUSQVARNA



**FULL PLASTIC KIT
COMPATIBLE FOR
HUSQVARNA**
0026855



0026855.031



0026855.090



0026855.553.024



0026855.553.025

FEATURES

Product compatible with the models shown in the application tab

APPLICATIONS

HUSQVARNA FE 250 2024 2025 | HUSQVARNA FE 350 2024 2025 | HUSQVARNA FE 350 PRO 2024 2025 | HUSQVARNA FE 350 S 2024 2025 |
HUSQVARNA FE 450 2024 2025 | HUSQVARNA FE 501 2024 2025 | HUSQVARNA FE 501 S 2024 2025 | HUSQVARNA TE 125 2024 2025 |
HUSQVARNA TE 150 2024 2025 | HUSQVARNA TE 250 2024 2025 | HUSQVARNA TE 300 2024 2025 | HUSQVARNA TE 300 PRO 2024 2025

HUSQVARNA / FULL PLASTIC KIT
FULL PLASTIC KIT COMPATIBLE FOR HUSQVARNA



**FULL PLASTIC KIT
COMPATIBLE FOR
HUSQVARNA**
0026851



0026851.031



0026851.090



0026851.553.023



0026851.553.024

FEATURES

Product compatible with the models shown in the application tab

APPLICATIONS

HUSQVARNA FC 250 2023 2024 | HUSQVARNA FC 350 2023 2024 | HUSQVARNA FC 450 2023 2024 | HUSQVARNA FX 350 2023 2024 |
HUSQVARNA TC 125 2023 2024 | HUSQVARNA TC 250 2023 2024 | HUSQVARNA TX 300 2023 2024

FULL PLASTIC KIT FOR
HUSQVARNA
0024051



0024051.031



0024051.090



0024051.553



0024051.553.022



0024051.553.023

APPLICATIONS

HUSQVARNA FE 250 2020 2021 2022 2023 | HUSQVARNA FE 350 2020 2021 2022 2023 | HUSQVARNA FE 350 S 2022 2023 | HUSQVARNA FE 450 2020 2021 2022 2023 | HUSQVARNA FE 501 2020 2021 2022 2023 | HUSQVARNA FE 501 S 2022 2023 | HUSQVARNA TE 150I 2020 2021 2022 2023 | HUSQVARNA TE 250I 2020 2021 2022 2023 | HUSQVARNA TE 300I 2020 2021 2022 2023

PRODUCTS RELATED



0024302
HEADLIGHT MASK VSL FOR
HUSQVARNA

□ 030



0021833
ACERBIS CHAIN GUIDE/SLIDER
KIT FOR KTM/HUSQVARNA/GAS
GAS

■ 010

■ 090



0024296
X-FUTURE HANDGUARDS

■ 203

■ 209

■ 232

■ 234

■ 237

■ 239

■ 241

■ 245

■ 251

■ 273

■ 279

■ 313

■ 315

■ 319

■ 343

■ 349

■ 371

■ 377

■ 848

■ 879

**FULL PLASTIC KIT FOR
HUSQVARNA**
0023538



0023538.030



0023538.031



0023538.040



0023538.090



0023538.553



0023538.553.020



0023538.553.023

APPLICATIONS

HUSQVARNA TC 65 2017 2018 2019 2020 2021 2022 2023

FULL PLASTIC KIT FOR
HUSQVARNA
0023481



0023481.030



0023481.031



0023481.072



0023481.092



0023481.132



0023481.070



0023481.083



0023481.090



0023481.237



0023481.315



0023481.553



0023481.553.020



0023481.553.022

APPLICATIONS

HUSQVARNA FC 250 2019 2020 2021 2022 | HUSQVARNA FC 350 2019 2020 2021 2022 | HUSQVARNA FC 450 2019 2020 2021 2022 |
HUSQVARNA FX 350 2020 2021 2022 | HUSQVARNA FX 450 2020 2021 2022 | HUSQVARNA TC 125 2019 2020 2021 2022 | HUSQVARNA TC
250 2019 2020 2021 2022 | HUSQVARNA TX 300 2020 2021 2022

**FULL PLASTIC KIT FOR
HUSQVARNA**
0023596



0023596.030



0023596.040



0023596.070



0023596.090



0023596.553

FEATURES

APPLICATION:

HUSQVARNA FE 250 2017 2018 2019
HUSQVARNA FE 350 2017 2018 2019
HUSQVARNA FE 450 2017 2018 2019
HUSQVARNA FE 501 2017 2018 2019

HUSQVARNA TE 250 2017
HUSQVARNA TE 250I 2018 2019
HUSQVARNA TE 300 2017
HUSQVARNA TE 300I 2018 2019
HUSQVARNA TX 125 2017 2018 2019

**FULL PLASTIC KIT FOR
HUSQVARNA**
0023056



0023056.030



0023056.031



0023056.040



0023056.090



0023056.553



0023056.553.020



0023056.553.023

APPLICATIONS

HUSQVARNA TC 85 2018 2019 2020 2021 2022 2023 2024

**FULL PLASTIC KIT FOR
HUSQVARNA**
0022808



0022808.040



0022808.090

APPLICATIONS

HUSQVARNA TC 85 2014 2015 2016 2017

**FULL PLASTIC KIT FOR
HUSQVARNA**
0022375



0022375.030



0022375.040



0022375.070



0022375.090



0022375.318



0022375.553



0022375.553.018



0022375.553.019

APPLICATIONS

HUSQVARNA FE 250 2017 2018 2019 | HUSQVARNA FE 350 2017 2018 2019 | HUSQVARNA FE 450 2017 2018 2019 | HUSQVARNA FE 501 2017 2018 2019 | HUSQVARNA TE 250 2017 | HUSQVARNA TE 250I 2018 2019 | HUSQVARNA TE 300 2017 | HUSQVARNA TE 300I 2018 2019 | HUSQVARNA TX 125 2017 2018 2019

**FULL PLASTIC KIT FOR
HUSQVARNA**
0021937



0021937.090



0021937.553

**FULL PLASTIC KIT FOR
HUSQVARNA**
0021831



0021831.030



0021831.090



0021831.315



0021831.318



0021831.325



0021831.553



0021831.553.017



0021831.553.018

APPLICATIONS

HUSQVARNA FC 250 2016 2017 2018 | HUSQVARNA FC 350 2016 2017 2018 | HUSQVARNA FC 450 2016 2017 2018 | HUSQVARNA TC 125 2016 2017 2018 | HUSQVARNA TC 250 2017 2018 | HUSQVARNA TC 300 2016 2017 2018

**FULL PLASTIC KIT FOR
HUSQVARNA**
0021819



0021819.090



0021819.318



0021819.553

APPLICATIONS

HUSQVARNA FE 250 2016 | HUSQVARNA FE 350 2016 | HUSQVARNA FE 450 2016 | HUSQVARNA FE 501 2016 | HUSQVARNA TE 125 2016 |
HUSQVARNA TE 250 2016 | HUSQVARNA TE 300 2016

FULL PLASTIC KIT FOR
HUSQVARNA
0017706



0017706.090



0017706.090.015



0017706.553



0017706.553.015



0017706.553.016

APPLICATIONS

HUSQVARNA FC 250 2014 2015 | HUSQVARNA FC 350 2014 2015 | HUSQVARNA FC 450 2014 2015 | HUSQVARNA TC 125 2014 2015 |
HUSQVARNA TC 250 2014 2015 2016

FULL PLASTIC KIT FOR
HUSQVARNA
0017705



0017705.090



0017705.090.015



0017705.553



0017705.553.015

APPLICATIONS

HUSQVARNA FE 250 2014 2015 | HUSQVARNA FE 350 2014 2015 | HUSQVARNA FE 450 2014 2015 | HUSQVARNA FE 501 2014 2015 |
HUSQVARNA TE 125 2014 2015 | HUSQVARNA TE 250 2014 2015 | HUSQVARNA TE 300 2014 2015



REPLICA CHAIN GUIDE
0025789



0025789.090

APPLICATIONS

GAS GAS MC 300 2025 | GAS GAS MC 85 2021 2022 2023 2024 | HUSQVARNA FE 250 2014 2015 2016 2017 2018 2019 2020 2021 2022 2023 | HUSQVARNA FE 350 2014 2015 2016 2017 2018 2019 2020 2021 2022 2023 | HUSQVARNA FE 350 PRO 2024 2025 | HUSQVARNA FE 350 S 2022 2023 | HUSQVARNA FE 450 2014 2015 2016 2017 2018 2019 2020 2021 2022 2023 | HUSQVARNA FE 501 2014 2015 2016 2017 2018 2019 2020 2021 2022 2023 | HUSQVARNA FE 501 S 2022 2023 | HUSQVARNA TC 85 2015 2016 2017 2018 2019 2020 2021 2022 2023 2024 | HUSQVARNA TE 125 2014 2015 2016 | HUSQVARNA TE 150I 2020 2021 2022 2023 | HUSQVARNA TE 250 2014 2015 2016 2017 | HUSQVARNA TE 250I 2018 2019 2020 2021 2022 2023 | HUSQVARNA TE 300 2014 2015 2016 2017 | HUSQVARNA TE 300I 2018 2019 2020 2021 2022 2023 | KTM EXC 125 2014 2015 2016 | KTM EXC 150 TPI 2020 2021 2022 2023 | KTM EXC 200 2014 2015 2016 2017 2018 | KTM EXC 250 2014 2015 2016 2017 | KTM EXC 250 TPI 2017 2018 2019 2020 2021 2022 2023 | KTM EXC 300 2014 2016 2017 | KTM EXC 300 TPI 2018 2019 2020 2021 2022 2023 | KTM EXC-F 250 2014 2015 2016 2017 2018 2019 2020 2021 2022 2023 | KTM EXC-F 350 2014 2015 2016 2017 2018 2019 2020 2021 2022 2023 | KTM EXC-F 450 2014 2015 2016 2017 2018 2019 2020 2021 2022 2023 | KTM SX 85 2015 2016 2017 2018 2019 2020 2021 2022 2023 2024 | KTM XC-W 125 2017 2018 2019 | KTM XC-W 150 TPI 2019 2020 2021 2022 2023 | KTM XC-W 250 TPI 2019 2020 2021 2022 2023 | KTM XC-W 300 TPI 2019 2020 2021 2022 2023 | KTM XCF-W 350 2020 2021 2022 2023 | KTM XCF-W 450 2023 | KTM XCF-W 500 2020 2021 2022 2023

PRODUCTS RELATED



0022933
FULL PLASTIC KIT FOR KTM

- 011.016 □ 030
- 031 ■ 072
- 090 ■ 092
- 110 ■ 132
- ▨ 553 ■ 553.019
- 553.020 ■ 553.021
- 553.023



CHAIN SLIDER
0025457



0025457.090

APPLICATIONS

GAS GAS EC 250 2024 | GAS GAS EC 250 F 2024 | GAS GAS EC 300 2024 | GAS GAS EC 350 F 2024 | GAS GAS EC 450 F 2024 | GAS GAS EC 500 F 2024 | GAS GAS EX 250 2024 | GAS GAS EX 250 F 2024 | GAS GAS EX 300 2024 | GAS GAS EX 350 F 2024 | GAS GAS EX 450 F 2024 | GAS GAS MC 125 2024 | GAS GAS MC 250 2024 | GAS GAS MC 250 F 2024 | GAS GAS MC 350 F 2024 | GAS GAS MC 450 F 2024 | HUSQVARNA FC 250 2023 2024 | HUSQVARNA FC 350 2023 2024 | HUSQVARNA FC 450 2023 2024 | HUSQVARNA FE 250 2024 | HUSQVARNA FE 350 2024 | HUSQVARNA FE 350 PRO 2024 | HUSQVARNA FE 350 S 2024 | HUSQVARNA FE 350 W 2024 | HUSQVARNA FE 450 2024 | HUSQVARNA FE 501 2024 | HUSQVARNA FE 501 S 2024 | HUSQVARNA FE 501 W 2024 | HUSQVARNA FX 350 2023 2024 | HUSQVARNA FX 450 2023 2024 | HUSQVARNA TC 125 2023 2024 | HUSQVARNA TC 250 2023 2024 | HUSQVARNA TE 150 2024 | HUSQVARNA TE 250 2024 | HUSQVARNA TE 300 2024 | HUSQVARNA TE 300 PRO 2024 | HUSQVARNA TX 300 2023 2024 | KTM EXC 150 2024 | KTM EXC 250 2024 | KTM EXC 300 2024 | KTM EXC-F 250 2024 | KTM EXC-F 350 2024 | KTM EXC-F 450 2024 | KTM EXC-F 500 2024 | KTM SX 125 2023 2024 | KTM SX 250 2023 2024 | KTM SX 300 2023 2024 | KTM SX-F 250 2023 2024 | KTM SX-F 350 2023 2024 | KTM SX-F 450 2023 2024 | KTM XC 125 2023 2024 | KTM XC 250 2023 2024 | KTM XC 300 2023 2024 | KTM XC-F 250 2023 2024 | KTM XC-F 350 2023 2024 | KTM XC-F 450 2023 2024 | KTM XC-W 150 2024 | KTM XC-W 250 2024 | KTM XC-W 300 2024 | KTM XCF-W 450 2024 | KTM XW-F 350 2024 | KTM XW-F 500 2024



REPLICA CHAIN GUIDE
0025458



0025458.090

APPLICATIONS

GAS GAS EC 125 2025 | GAS GAS EC 250 2024 2025 | GAS GAS EC 250 F 2024 2025 | GAS GAS EC 300 2024 2025 | GAS GAS EC 350 F 2024 2025 | GAS GAS EC 450 F 2024 2025 | GAS GAS EC 500 F 2024 2025 | GAS GAS EX 250 2024 2025 | GAS GAS EX 250 F 2024 2025 | GAS GAS EX 300 2024 2025 | GAS GAS EX 350 F 2024 2025 | GAS GAS EX 450 F 2024 2025 | GAS GAS MC 125 2024 2025 | GAS GAS MC 150 2024 2025 | GAS GAS MC 250 2024 2025 | GAS GAS MC 250 F 2024 2025 | GAS GAS MC 300 2025 | GAS GAS MC 350 F 2024 2025 | GAS GAS MC 450 F 2024 2025 | HUSQVARNA FC 250 2023 2024 2025 | HUSQVARNA FC 350 2023 2024 2025 | HUSQVARNA FC 450 2023 2024 2025 | HUSQVARNA FE 250 2024 2025 | HUSQVARNA FE 350 2024 2025 | HUSQVARNA FE 350 PRO 2024 2025 | HUSQVARNA FE 350 S 2024 2025 | HUSQVARNA FE 350 W 2024 | HUSQVARNA FE 450 2024 2025 | HUSQVARNA FE 501 2024 2025 | HUSQVARNA FE 501 S 2024 2025 | HUSQVARNA FE 501 W 2024 | HUSQVARNA FX 350 2023 2024 2025 | HUSQVARNA FX 450 2023 2024 2025 | HUSQVARNA TC 125 2023 2024 2025 | HUSQVARNA TC 150 2025 | HUSQVARNA TC 250 2023 2024 2025 | HUSQVARNA TC 300 2025 | HUSQVARNA TE 150 2024 2025 | HUSQVARNA TE 250 2024 2025 | HUSQVARNA TE 300 2024 2025 | HUSQVARNA TE 300 PRO 2024 2025 | HUSQVARNA TX 300 2023 2024 2025 | KTM EXC 150 2024 2025 | KTM EXC 250 2024 2025 | KTM EXC 300 2024 2025 | KTM EXC-F 250 2024 2025 | KTM EXC-F 350 2024 2025 | KTM EXC-F 450 2024 2025 | KTM EXC-F 500 2024 2025 | KTM SX 125 2023 2024 2025 | KTM SX 150 2025 | KTM SX 250 2023 2024 2025 | KTM SX 300 2023 2024 2025 | KTM SX-F 250 2023 2024 2025 | KTM SX-F 350 2023 2024 2025 | KTM SX-F 450 2023 2024 2025 | KTM XC 125 2023 2024 2025 | KTM XC 250 2023 2024 2025 | KTM XC 300 2023 2024 2025 | KTM XC-F 250 2023 2024 2025 | KTM XC-F 350 2023 2024 2025 | KTM XC-F 450 2023 2024 2025 | KTM XC-W 125 2025 | KTM XC-W 150 2024 2025 | KTM XC-W 250 2024 2025 | KTM XC-W 300 2024 2025 | KTM XCF-W 450 2024 2025 | KTM XW-F 350 2024 2025 | KTM XW-F 500 2024 2025

REPLICA CHAIN GUIDE
0012211



0012211.090

APPLICATIONS

HUSABERG FE 250 2013 2014 | HUSABERG FE 350 2013 2014 | HUSABERG FE 450 2013 2014 | HUSABERG TE 125 2009 2010 2011 2012 2013 2014 | HUSABERG TE 250 2013 2014 | HUSABERG TE 300 2013 2014 | KTM EXC 125 2008 2009 2010 2011 2012 2013 | KTM EXC 200 2008 2009 2010 2011 2012 2013 | KTM EXC 250 2008 2009 2010 2011 2012 2013 | KTM EXC 300 2008 2009 2010 2011 2012 2013 | KTM EXC 380 2T 2008 2009 2010 2011 2012 2013 | KTM EXC-F 250 2008 2009 2010 2011 2012 2013 | KTM EXC-F 350 2008 2009 2010 2011 2012 2013 | KTM EXC-F 400 2008 2009 2010 2011 2012 2013 | KTM EXC-F 450 2008 2009 2010 2011 2012 2013 | KTM EXC-F 500 2007 2008 2009 2010 2011 2012 2013 | KTM EXC-F 520 2008 2009 2010 2011 2012 2013 | KTM SX 125 2007 | KTM SX 150 2007 | KTM SX 200 2007 | KTM SX 250 2007 | KTM SX 85 2007 | KTM SX-F 250 2007 | KTM SX-F 350 2007 | KTM SX-F 450 2007 | KTM SX-F 505 2007

**CHAIN GUIDE FOR
KTM/HUSQVARNA**
0015914



0015914.090

APPLICATIONS

HUSQVARNA FC 250 2015 2016 2017 2018 2019 2020 2021 2022 | HUSQVARNA FC 350 2015 2016 2017 2018 2019 2020 2021 2022 | HUSQVARNA FC 450 2015 2016 2017 2018 2019 2020 2021 2022 | HUSQVARNA FX 350 2020 2021 2022 2023 2024 | HUSQVARNA FX 450 2020 2021 2022 | HUSQVARNA TC 125 2015 2016 2017 2018 2019 2020 2021 2022 | HUSQVARNA TC 250 2015 2016 2017 2018 2019 2020 2021 2022 | HUSQVARNA TX 300 2020 2021 2022 | KTM SX 125 2008 2009 2010 2011 2012 2013 2014 2015 2016 2017 2018 2019 2020 2021 2022 2023 | KTM SX 150 2011 2012 2013 2014 2015 2016 2017 2018 2019 | KTM SX 200 2011 2012 2013 2014 2015 2016 2017 | KTM SX 250 2008 2009 2010 2011 2012 2013 2014 2015 2016 2017 2018 2019 2020 2021 2022 | KTM SX-F 250 2008 2009 2010 2011 2012 2013 2014 2015 2016 2017 2018 2019 2020 2021 2022 | KTM SX-F 350 2008 2009 2010 2011 2012 2013 2014 2015 2016 2017 2018 2019 2020 2021 2022 | KTM SX-F 450 2008 2009 2010 2011 2012 2013 2014 2015 2016 2017 2018 2019 2020 2021 2022 | KTM SX-F 505 2008 2009 2010 2011 2012 2013 2014 2015 2016 2017 2018 | KTM XC 125 2020 2021 2022 | KTM XC 250 2019 2023 2024 | KTM XC 250 TPI 2020 2021 2022 | KTM XC 300 2019 | KTM XC 300 TPI 2020 2021 2022 | KTM XC-F 250 2019 2020 2021 2022 | KTM XC-F 350 2019 2020 2021 2022 2024 | KTM XC-F 450 2019 2020 2021 2022

MUD FLAP
0025456



0025456.090

APPLICATIONS

HUSQVARNA FC 250 2023 2024 | HUSQVARNA FC 350 2023 2024 | HUSQVARNA FC 450 2023 2024 | HUSQVARNA FX 350 2023 2024 | HUSQVARNA FX 450 2023 2024 | HUSQVARNA TC 125 2023 2024 | HUSQVARNA TC 250 2023 2024 | HUSQVARNA TX 300 2023 2024 | KTM SX 125 2023 2024 | KTM SX 250 2023 2024 | KTM SX 300 2023 2024 | KTM SX-F 250 2023 2024 | KTM SX-F 350 2023 2024 | KTM SX-F 450 2023 2024 | KTM XC 125 2023 2024 | KTM XC 250 2023 2024 | KTM XC 300 2023 2024 | KTM XC-F 250 2023 2024 | KTM XC-F 350 2023 2024 | KTM XC-F 450 2023 2024

MUD FLAP
0025311



0025311.090

APPLICATIONS

GAS GAS MC 65 2021 2022 2023 | HUSQVARNA TC 65 2017 2018 2019 2020 2021 2022 2023 | KTM SX 65 2016 2017 2018 2019 2020 2021 2022 2023